

ECHO COMPLEX BEHAVIOR

DATE OF SESSION: October 6, 2025

REMINDERS

AGENDA



Introduction to the Project ECHO Model

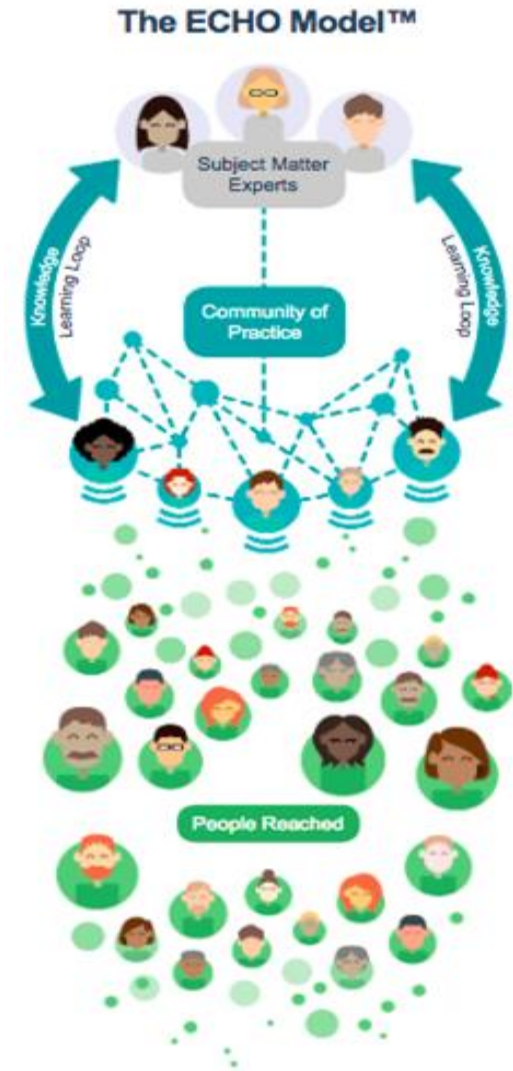
Katherine Bateman, PhD, BCBA-D, Facilitator

What is Project ECHO?

- Extension for Community Healthcare Outcomes
- Virtual learning network that started in the early 2000s in New Mexico to increase access to Hep C expertise in rural areas of the state.
 - Has expanded to numerous disciplines to increase capacity and knowledge in underserved communities across the world.
- Brings together practitioners and experts in the field to create a multidisciplinary learning community
- Educational purposes, not a consultation
- “Moving knowledge, not people”
- Currently, over 2000 ECHO networks across the world

The ECHO Model- Roles

- Hub
 - Professionals with expertise in topic area of ECHO
 - Multidisciplinary
- Spokes
 - Medical Doctors
 - Nurses/Other Healthcare
 - Teachers
 - Parents/Caregivers
 - Early Intervention Providers



Workshop/Didactic Instruction

- 20 ish, short presentations focused on different areas related to the ECHO topic
- Powerpoint presentation
- “Learning bursts”
- Complex Behavior ECHO
 - Topics related to complex behavior
 - Ex: ABA, Biobehavioral model, communication, educational supports, occupational therapy, trauma information practice, mental health supports, medication management related to behavior, parent perspective, etc.

Case Presentations

- > A fundamental part of the ECHO model (“tele-mentorship”)
- > De-identified- NO PHI!
- > Collaborative Learning Network
 - Clarifying questions and recommendations from spokes (participants joining us)
 - Follow-up with recommendations
- Does not establish a patient-client relationship because it is de-identified. This is important!
- Support to providers

Case Presentations

- Redcap intake form
 - Fill out to your best ability, okay not to know all the information that it asks for
- NO PHI
- We are doing a case presentation today- hang tight! You will know exactly what all this means after you see one in action.

ECHO Session Format

- Introductions (Name, Role, Location- in Chat box!)
 - Spokes/participants
 - Hub Team/ INCLUDE Team
- Announcements
- Workshop/ Didactic Presentation (Powerpoint)
- Case Presentations (sign-up sheet)
 - Spoke/participant presents case
 - Facilitator summarizes the presented case
 - Clarifying questions (*no suggestions yet*)
 - Spokes/participants, INCLUDE Team
 - Recommendations/suggestions
 - Spokes/ Participants, INCLUDE Team
- Closing

Zoom Norms

- We are so glad you are joining us
- Please mute when you are not speaking
- Use raise hand function as much as possible
- Let's multitask and get the most out of these sessions- multiple modalities of communication. Spoken language and chat box.
- We are all learning together. "All teach, all learn" model
- Maintain confidentiality of individuals presented during case presentations, as well as your colleagues on this call. Remember we are all here to learn, be kind, respectful, inclusive, and supportive of your colleagues. This is the heart of our group.

CASE PRESENTATION

NAME OF PRESENTER

REMINDER: DO NOT USE THE NAME OF PATIENT/CLIENT OR ANY
OTHER IDENTIFYING INFORMATION

POLL TIME – SEE ZOOM POLL

CLARIFYING QUESTIONS?

RECCOMENDATIONS?

POLL TIME – SEE ZOOM POLL

THANK YOU & NEXT STEPS
