

# Psychoeducational, Psychological, and Neuropsychological Assessments: What's the difference?

Karís Casagrande, PhD

Clinical Psychology

Seattle Children's Autism Center & University of Washington

# Disclosures

Today's speaker has no financial relationships with an ineligible company relevant to this presentation to disclose.

None of the planners have relevant financial relationship(s) to disclose with ineligible companies whose primary business is producing, marketing, selling, re-selling, or distributing healthcare products used by or on patients

*\*All relevant financial relationships have been mitigated\**



# Objectives

1

Learn about domains of difference in intellectual and developmental disabilities (I/DD)

2

Describe three types of assessments commonly recommended for individuals with I/DD

3


Understand subtle differences across the types of assessment to make an appropriate referral

# Intellectual and Developmental Disabilities

Group of diagnoses related to differences in brain growth and development



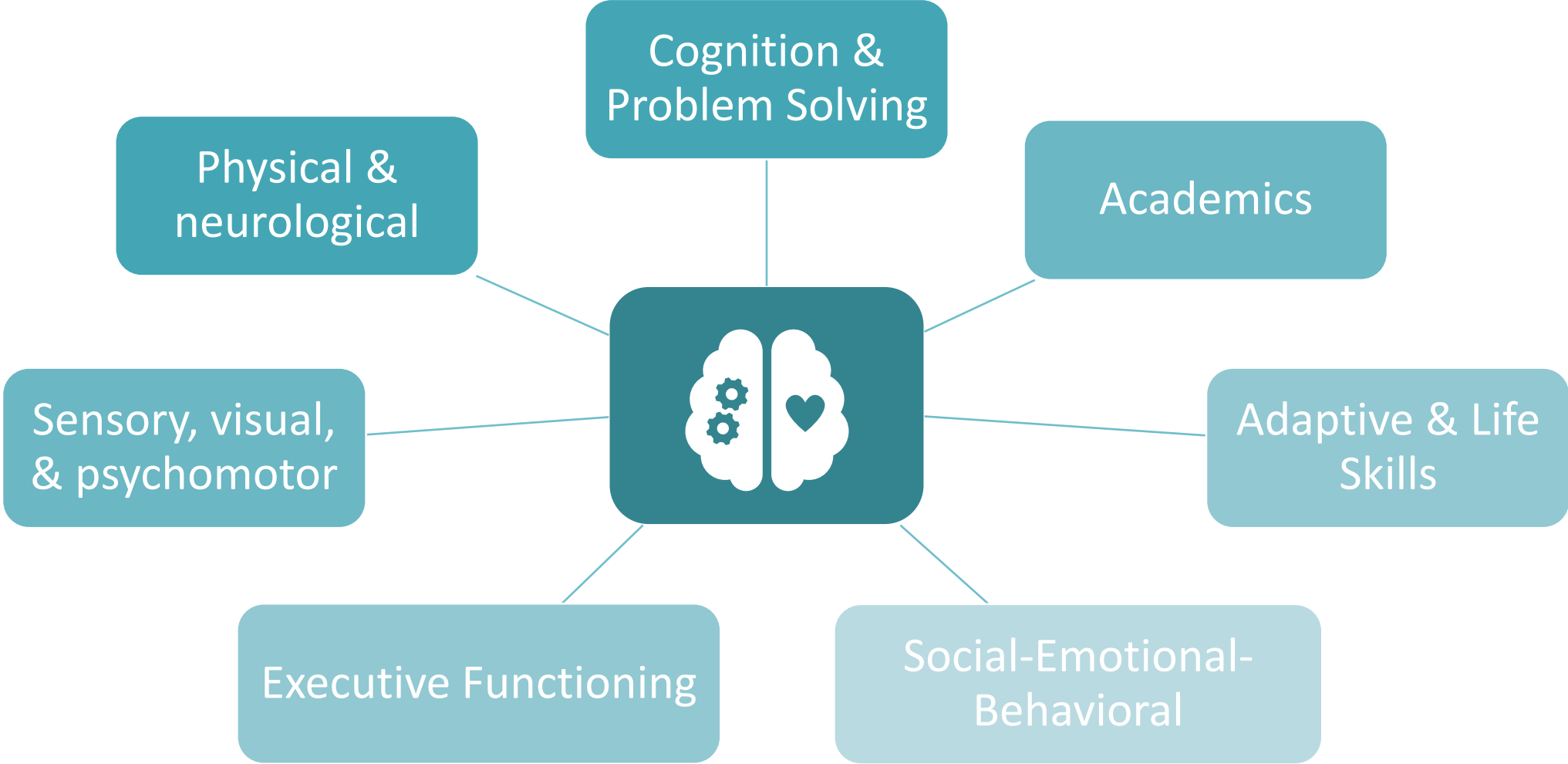
Produce differences in a variety of domains of functioning



I/DD diagnoses often co-occur with each other and other disorders

[Thapar, Copper, and Rutter, 2017](#); [Zauche, Mahoney, and Higgins, 2017](#)

# Domains of development and difference



# Assessment Overview

## Types

- Psychoeducational
- Psychological
- Neuropsychological
- (Medical/  
neurological)
- (Ancillary assessment  
such as speech, OT,  
FBA)

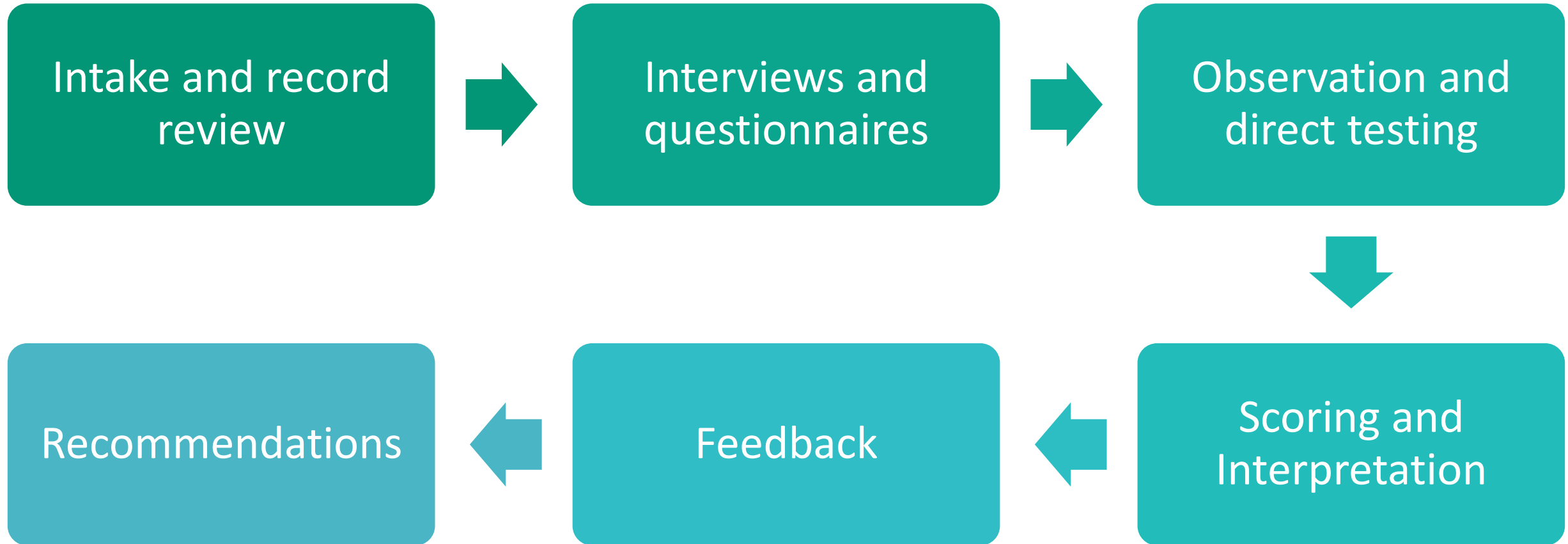
## Goals

- Diagnostic  
clarification
- Profile of strengths  
and challenges
- Establish a baseline  
of functioning
- Treatment planning  
and prioritization

## Process

- Intake/record review
- Clinical interviewing  
and questionnaires
- Direct testing and/or  
observation
- Interpretation and  
feedback
- Recommendations

# Process



# What are the differences?

## PROVIDER TYPE AND FOCUS

	Psychoeducational	Psychological	Neuropsychological
Completed by*			
Focus on			
Context			
Overviews			
Examples***			
<a href="https://mcandrewslaw.com/publications-and-presentations/articles/psychological-vs-psychoeducational-vs-neuropsychological-evaluations/">https://mcandrewslaw.com/publications-and-presentations/articles/psychological-vs-psychoeducational-vs-neuropsychological-evaluations/</a>			

\*Psychometrists are sometimes used by all three

\*\*Additional training for school or clinical psychologists required

\*\*\*Not an endorsement, used for example purposes only



# What are the differences?

## PROVIDER TYPE AND FOCUS

	Psychoeducational		
<b>Completed by*</b>	School psychologist		
<b>Focus on</b>	Identifying barriers to learning and educational needs		
<b>Context</b>	Educational decision making and planning		
<b>Overviews</b>	<a href="#">NASP position statement</a> <a href="#">OSPI Statement on Evaluation Procedures</a>		
<b>Examples***</b>	<a href="#">OSPI evaluations and IEEs</a> <a href="#">Hallowell Todaro ADHD Center</a> <a href="#">Associates in Behavior and Child Development</a>		
	<a href="https://mcandrewslaw.com/publications-and-presentations/articles/psychological-vs-psychoeducational-vs-neuropsychological-evaluations/">https://mcandrewslaw.com/publications-and-presentations/articles/psychological-vs-psychoeducational-vs-neuropsychological-evaluations/</a>		

\*Psychometrists are sometimes used by all three

\*\*Additional training for school or clinical psychologists required

\*\*\*Not an endorsement, used for example purposes only

# What are the differences?

## PROVIDER TYPE AND FOCUS

		Psychological	
Completed by*		Clinical psychologist	
Focus on		Social-emotional-behavioral functioning	
Context		Diagnosis and therapeutic treatment planning	
Overviews		<a href="#">APA article on psychological assessment</a> <a href="#">WAC on psychological evaluation</a> <a href="#">NIMH Psychological Testing overview</a>	
Examples***		<a href="#">UW Child Development Clinic</a> <a href="#">Child and Adolescent Psychological Services of Seattle (CAPSS)</a>	
<a href="https://mcandrewslaw.com/publications-and-presentations/articles/psychological-vs-psychoeducational-vs-neuropsychological-evaluations/">https://mcandrewslaw.com/publications-and-presentations/articles/psychological-vs-psychoeducational-vs-neuropsychological-evaluations/</a>			

\*Psychometrists are sometimes used by all three  
 \*\*Additional training for school or clinical psychologists required  
 \*\*\*Not an endorsement, used for example purposes only

# What are the differences?

## PROVIDER TYPE AND FOCUS

	Psychoeducational	Psychological	Neuropsychological
Completed by*			Neuropsychologist**
Focus on			Functioning as related to a medical or neurological condition
Context			Inform medical decision making or monitor treatment progress
Overviews			<a href="#">AACN Practice Guidelines</a> <a href="#">Schroeder, Martin, and Walling, 2019</a>
Examples***			<a href="#">Seattle Children's Neuropsychology</a> <a href="#">Mary Bridge's Neuropsychology</a>
	<a href="https://mcandrewslaw.com/publications-and-presentations/articles/psychological-vs-psychoeducational-vs-neuropsychological-evaluations/">https://mcandrewslaw.com/publications-and-presentations/articles/psychological-vs-psychoeducational-vs-neuropsychological-evaluations/</a>		

\*Psychometrists are sometimes used by all three

\*\*Additional training for school or clinical psychologists required

\*\*\*Not an endorsement, used for example purposes only

# What are the differences?

## PROVIDER TYPE AND FOCUS

	Psychoeducational	Psychological	Neuropsychological
<b>Completed by*</b>	School psychologist	Clinical psychologist	Neuropsychologist**
<b>Focus on</b>	Identifying barriers to learning and educational needs	Social-emotional-behavioral functioning	Functioning as related to a medical or neurological condition
<b>Context</b>	Educational decision making and planning	Diagnosis and therapeutic treatment planning	Inform medical decision making or monitor treatment progress
<b>Overviews</b>	<a href="#">NASP position statement</a> <a href="#">OSPI Statement on Evaluation Procedures</a>	<a href="#">APA article on psychological assessment</a> <a href="#">WAC on psychological evaluation</a> <a href="#">NIMH Psychological Testing overview</a>	<a href="#">AACN Practice Guidelines</a> <a href="#">Schroeder, Martin, and Walling, 2019</a>
<b>Examples***</b>	<a href="#">OSPI evaluations and IEEs</a> <a href="#">Hallowell Todaro ADHD Center</a> <a href="#">Associates in Behavior and Child Development</a>	<a href="#">UW Child Development Clinic</a> <a href="#">Child and Adolescent Psychological Services of Seattle (CAPSS)</a>	<a href="#">Seattle Children's Neuropsychology</a> <a href="#">Mary Bridge's Neuropsychology</a>
	<a href="https://mcandrewslaw.com/publications-and-presentations/articles/psychological-vs-psychoeducational-vs-neuropsychological-evaluations/">https://mcandrewslaw.com/publications-and-presentations/articles/psychological-vs-psychoeducational-vs-neuropsychological-evaluations/</a>		

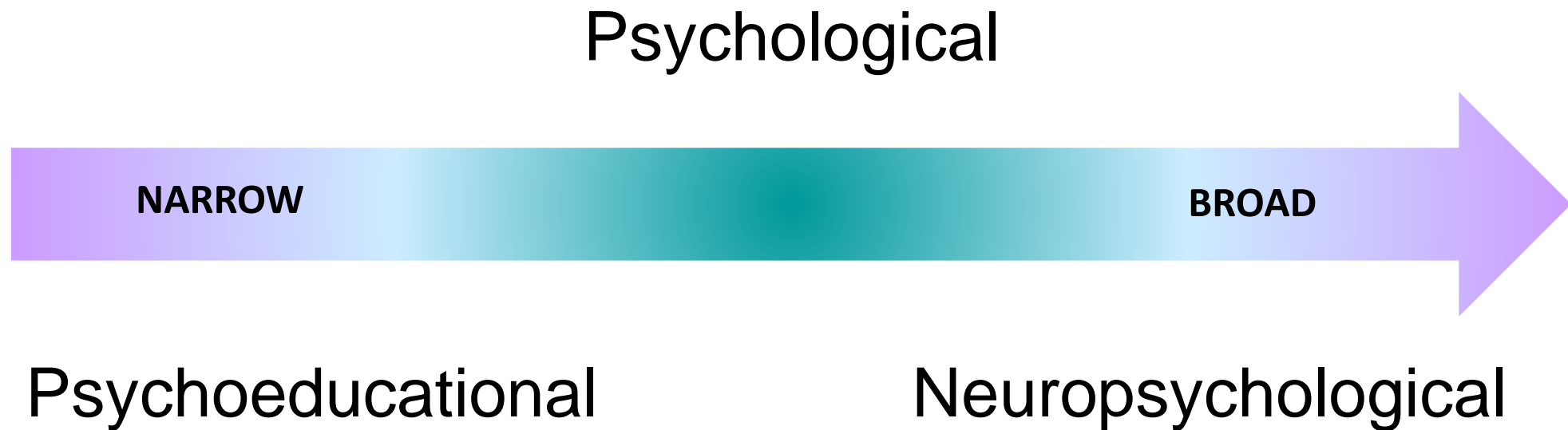
\*Psychometrists are sometimes used by all three

\*\*Additional training for school or clinical psychologists required

\*\*\*Not an endorsement, used for example purposes only

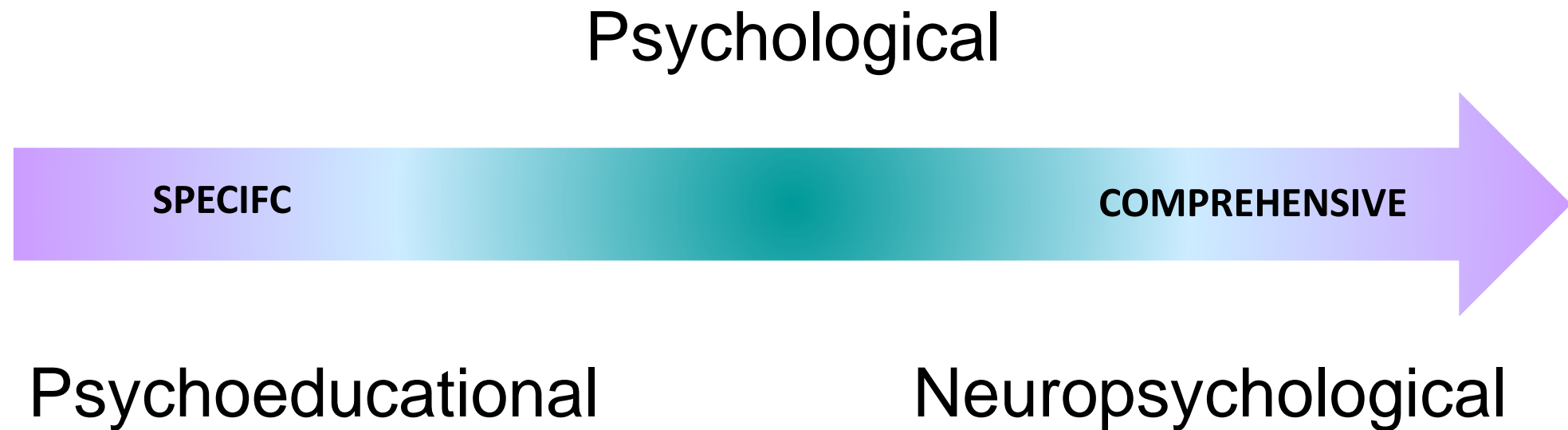
# What are the differences?

## SCOPE OF TESTING

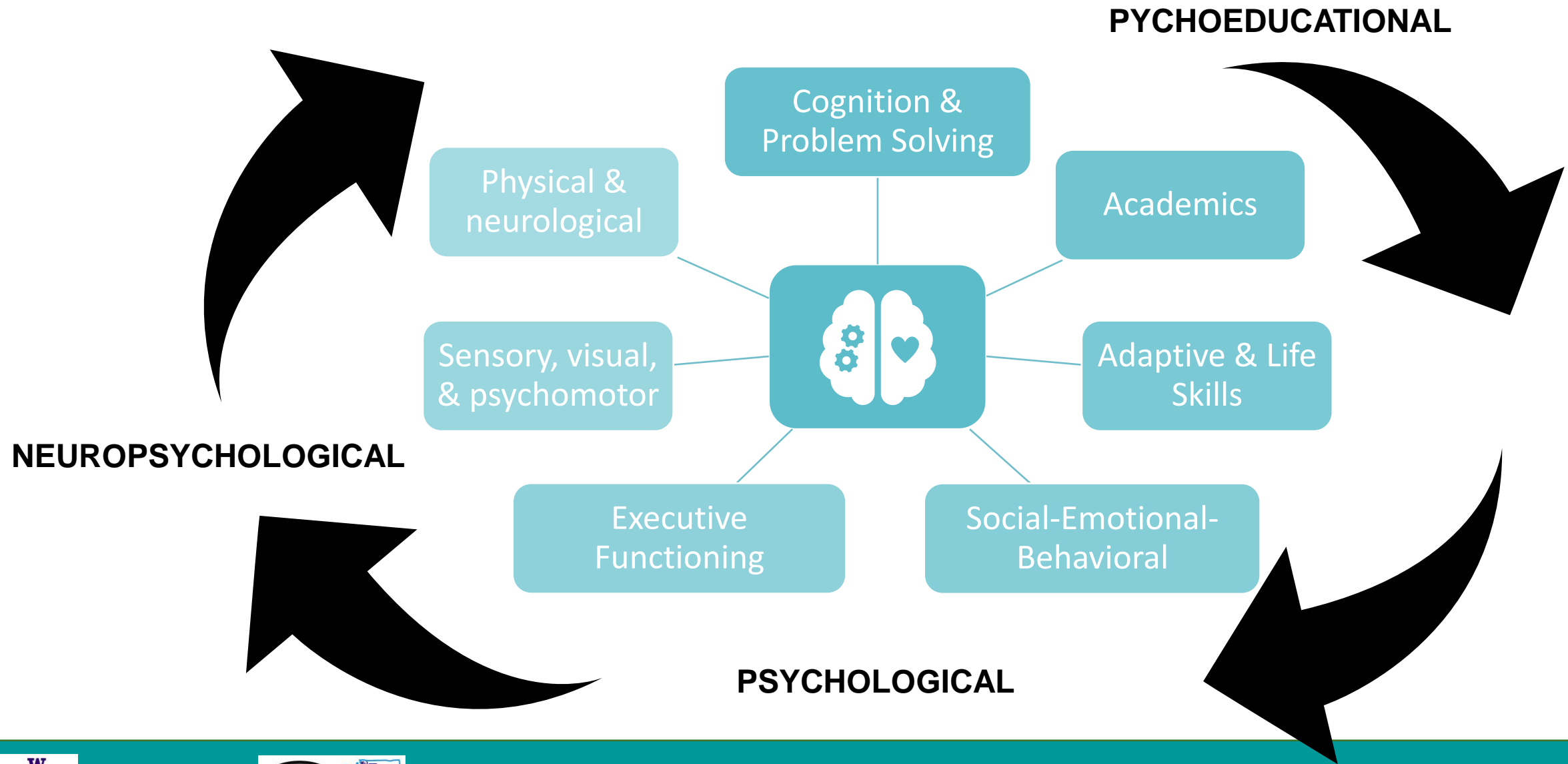


# What are the differences?

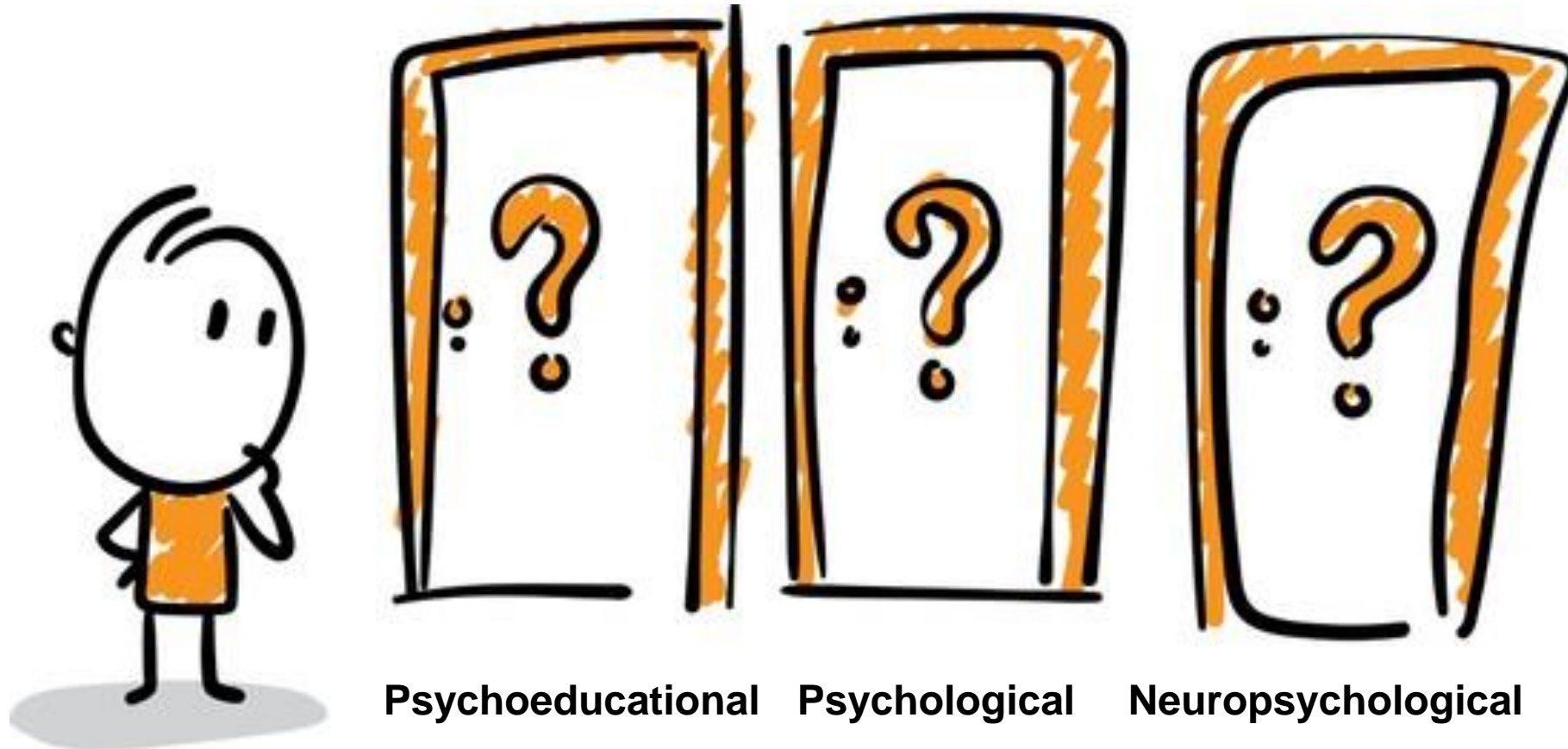
## DOMAINS ASSESSED



# What are the differences?

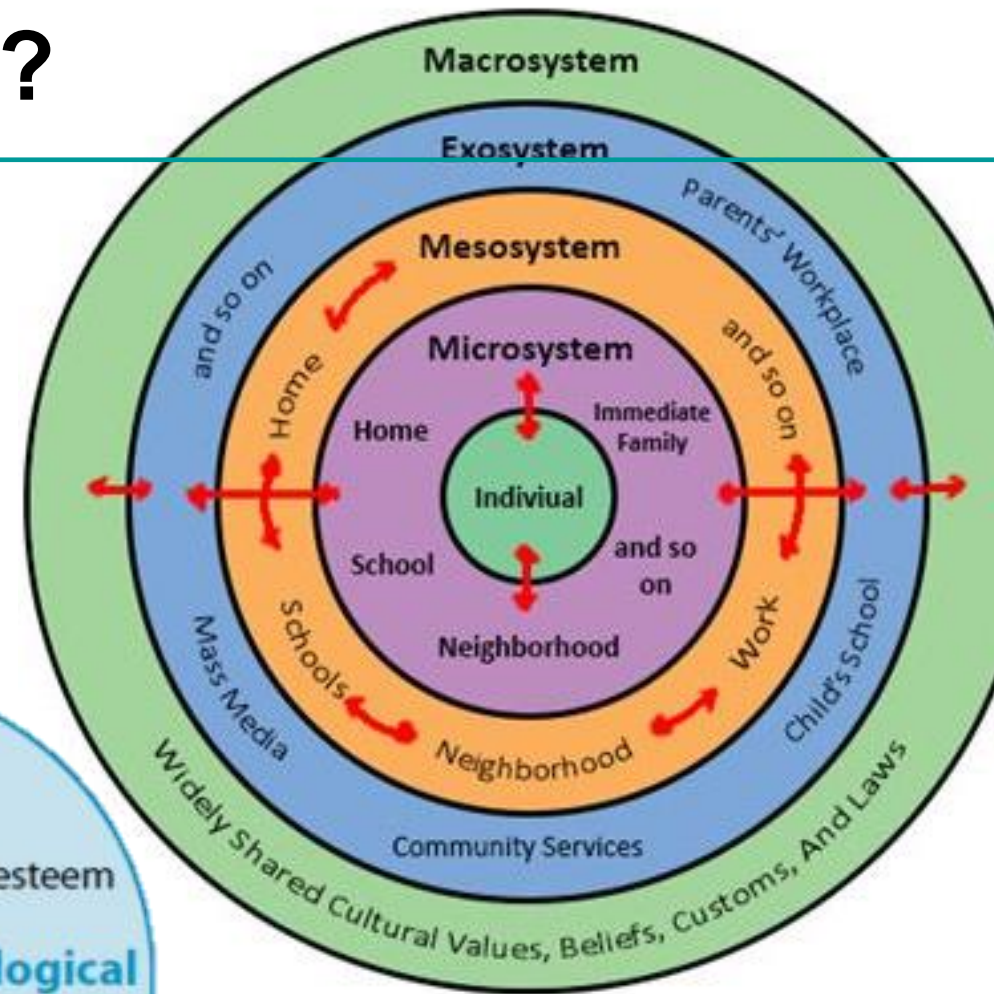
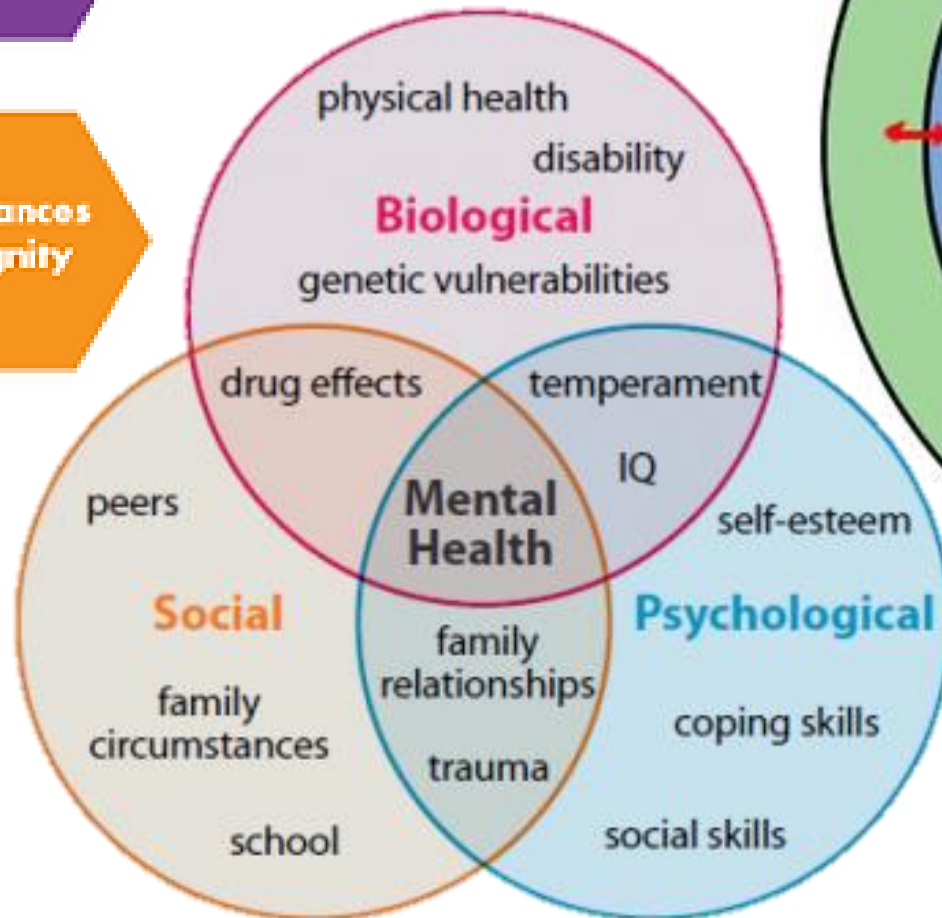


# So... which do you want?





# What missing?



# Questions

---

**THANK YOU!**

Contact information:

Karís Casagrande, [karisc1@uw.edu](mailto:karisc1@uw.edu)