

Accessing Appropriate Referrals- Diagnosis of ASD (COE Program) & WISE Program

Jim Mancini, Gary Stobbe, and Paul Davis

Disclosures

Today's speakers have no financial relationships with an ineligible company relevant to this presentation to disclose.

None of the planners have relevant financial relationship(s) to disclose with ineligible companies whose primary business is producing, marketing, selling, re-selling, or distributing healthcare products used by or on patients

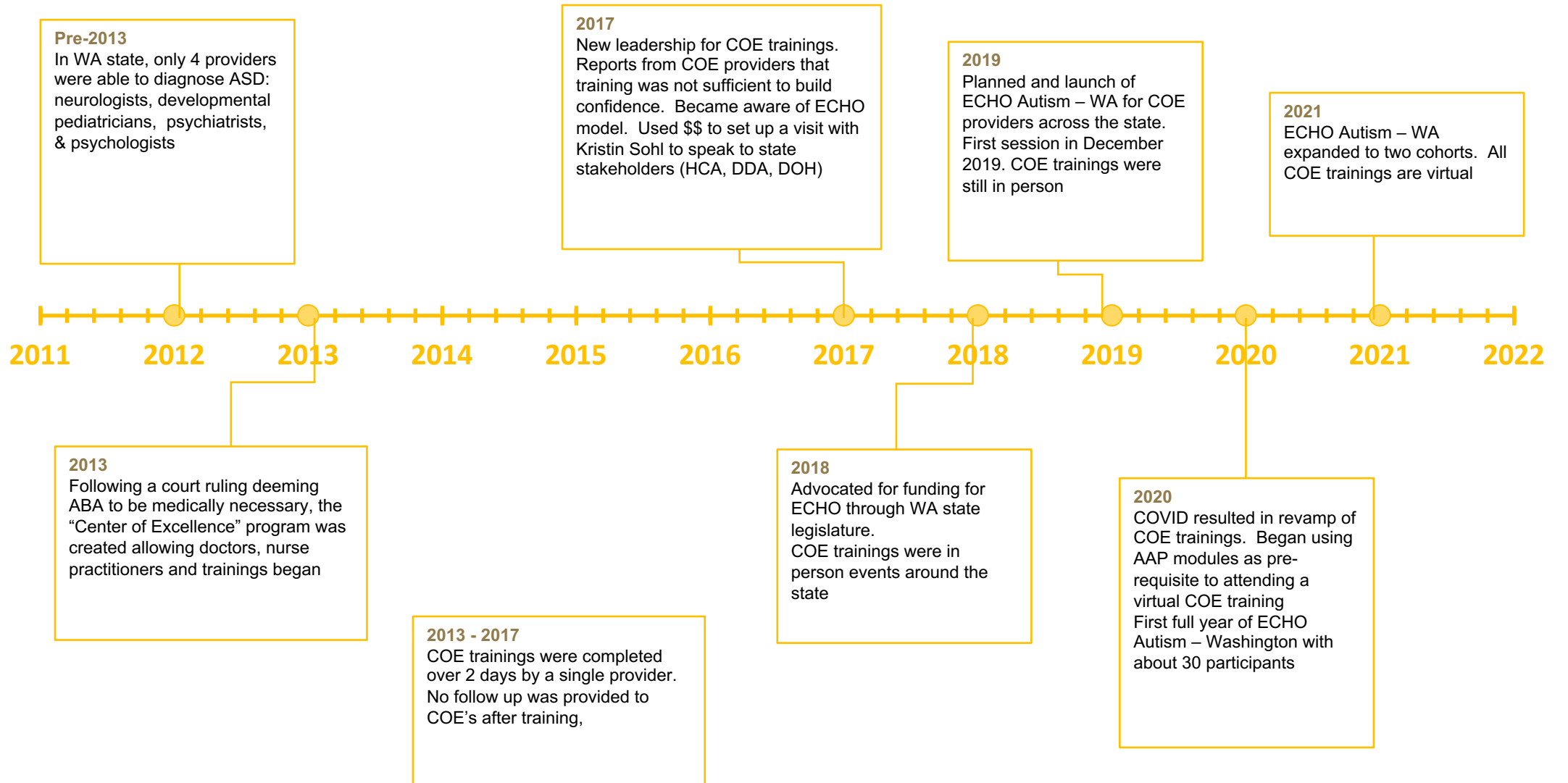
All relevant financial relationships have been mitigated



Objectives

- Learn about Center of Excellence (COE) system to access ASD diagnoses
- Referral information for ABA therapy
- Referral to WISe programs

COE Timeline



Barriers to access ASD diagnosis and treatment in WA State

Geographic - Reduced access for rural communities

Financial - Economic/insurance disparities

Cultural - Reduced access for communities of color

Specialist workforce shortage - Impacting all specialties (psychology, medical, speech/OT, ABA)

Medical provider training - Primary care gaps in knowledge and training

Complexity of diagnostic evaluations - Multidisciplinary approach unrealistic for most provider organizations

WA State HCA's Solution – The Centers of Excellence in Autism (COE) System

- Launched in 2013 - response to judge ruling ABA as “medically necessary” in ASD
 - Psychologists, psychiatrists, neurologists, dev peds “grandfathered” in
 - PCPs (internists, FPs, pediatricians, NPs, NDs) qualify with a “certification” goal – to redistribute workload, grow capacity locally, increase access
- First live training in Longview, WA (2013)
 - Next training is March: **Friday, March 3, 2023, 8:30 a.m. – 4:30 pm**
 - **Registration link:** <https://redcap.link/COE-Training-March-3-2023>
- Currently 240+ COE providers
 - <https://www.hca.wa.gov/assets/billers-and-providers/index-coe-applied-behavioral-analysis.pdf>

Applied Behavior Analysis (ABA)

Referral for ABA:

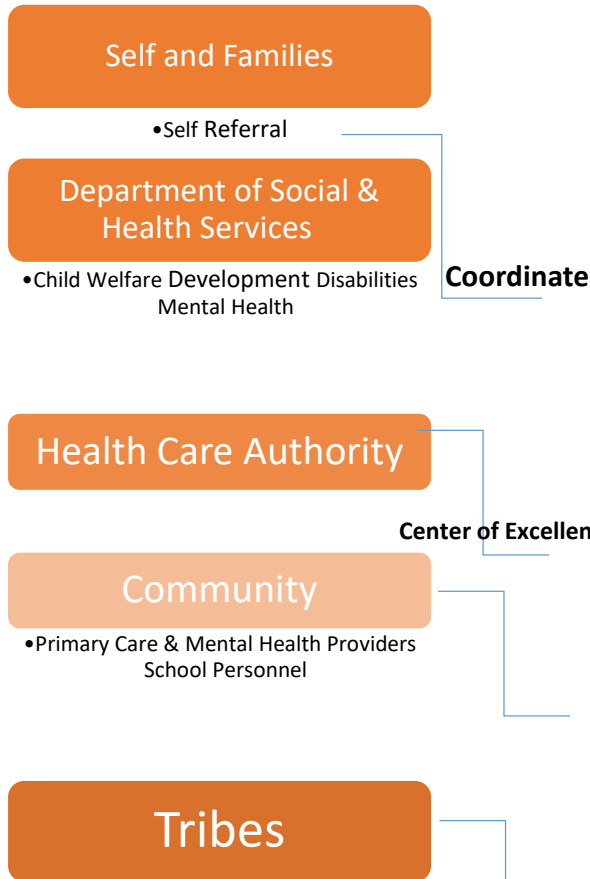
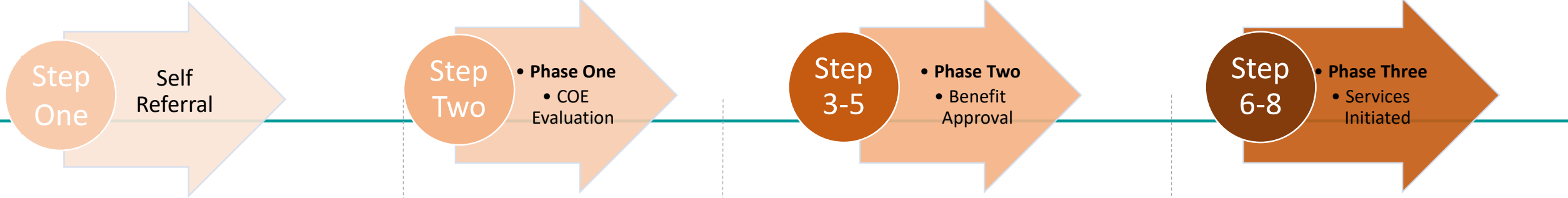
<https://www.hca.wa.gov/billers-providers-partners/program-information-providers/applied-behavior-analysis-aba-therapy>

Applied Behavior Analysis (ABA) therapy

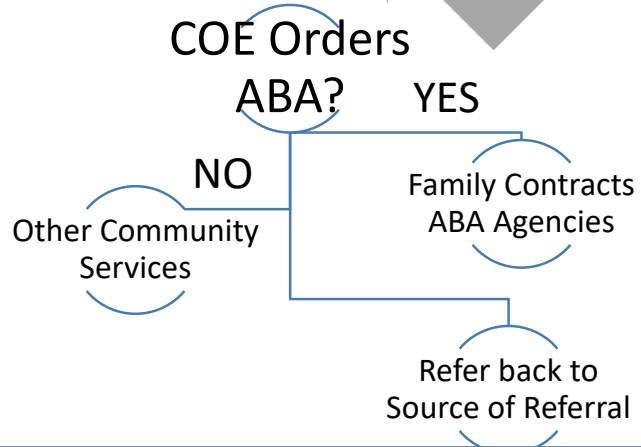
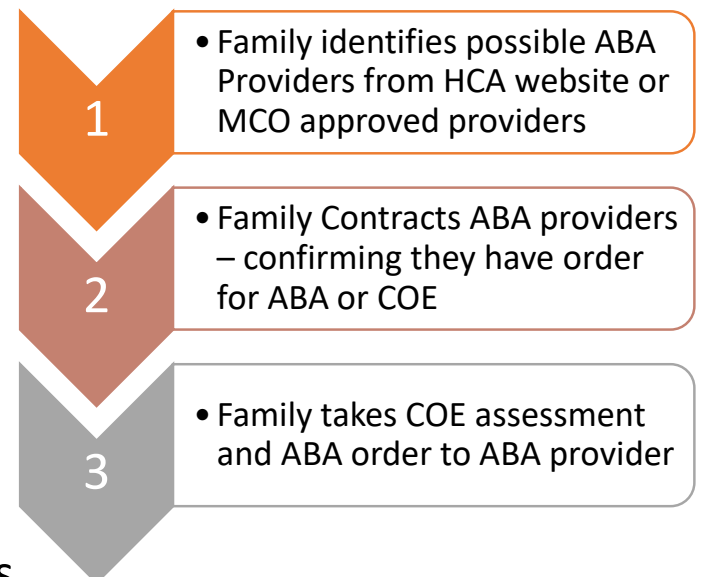
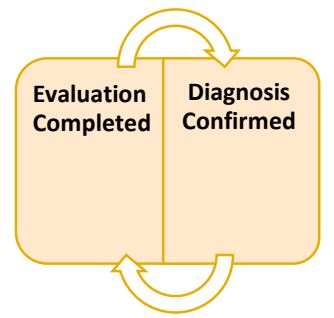
Applied Behavior Analysis (ABA) is covered under Apple Health for clients with Autism Spectrum Disorder (ASD) **or other developmental and intellectual disabilities**. ABA therapy seeks to change inappropriate behaviors when other less intensive treatment has been unsuccessful.

ABA is ordered when deemed to be “medically necessary”.

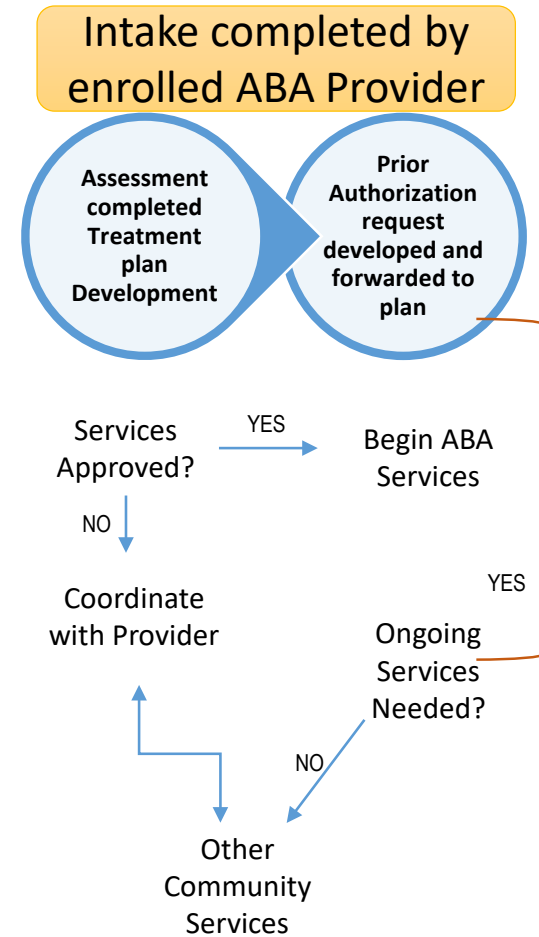
What does this mean?



- diagnostic testing
- comprehensive evaluation and
- multi-disciplinary treatment recommendations



Note: If there is a waiting list for ABA, put yourself on the list



Who Can Receive WISE?

- WISE is available to Medicaid eligible children/youth from birth to 21st birthday that have complex and intensive mental health needs.

You may want to refer a child for a WISE screening if he/she is:

- A frequent user of the crisis line or emergency rooms, due to concerns about the child's mental health.
- Experiencing hard to understand behaviors (such as running away or frequent arrests that are due to mental health) that are challenging to the child's parents, other caregivers, or therapist/clinician, and traditional services alone are not helping.
- Displaying an elevated risk of harm to themselves or others.

You may want to refer a child for a WISe screening if he/she is:

In need of a more flexible and engaging approach and is:

- Involved in multiple systems (such as mental health, child welfare (CPS), juvenile justice, developmental disabilities services, and/or substance use disorder treatment) and the system(s) are struggling with competing goals for the child.
- In Special Education and/or has a 504 Plan, with multiple school suspensions for mental health and/or behavioral issues.
- Has complex medical needs in addition to mental health needs.

What Happens Once I Make a Referral?

- All eligible referrals should result in a WISE screening.
- A WISE screening must be offered within 14 days of receiving a referral.

Is WISE Available in my Community?

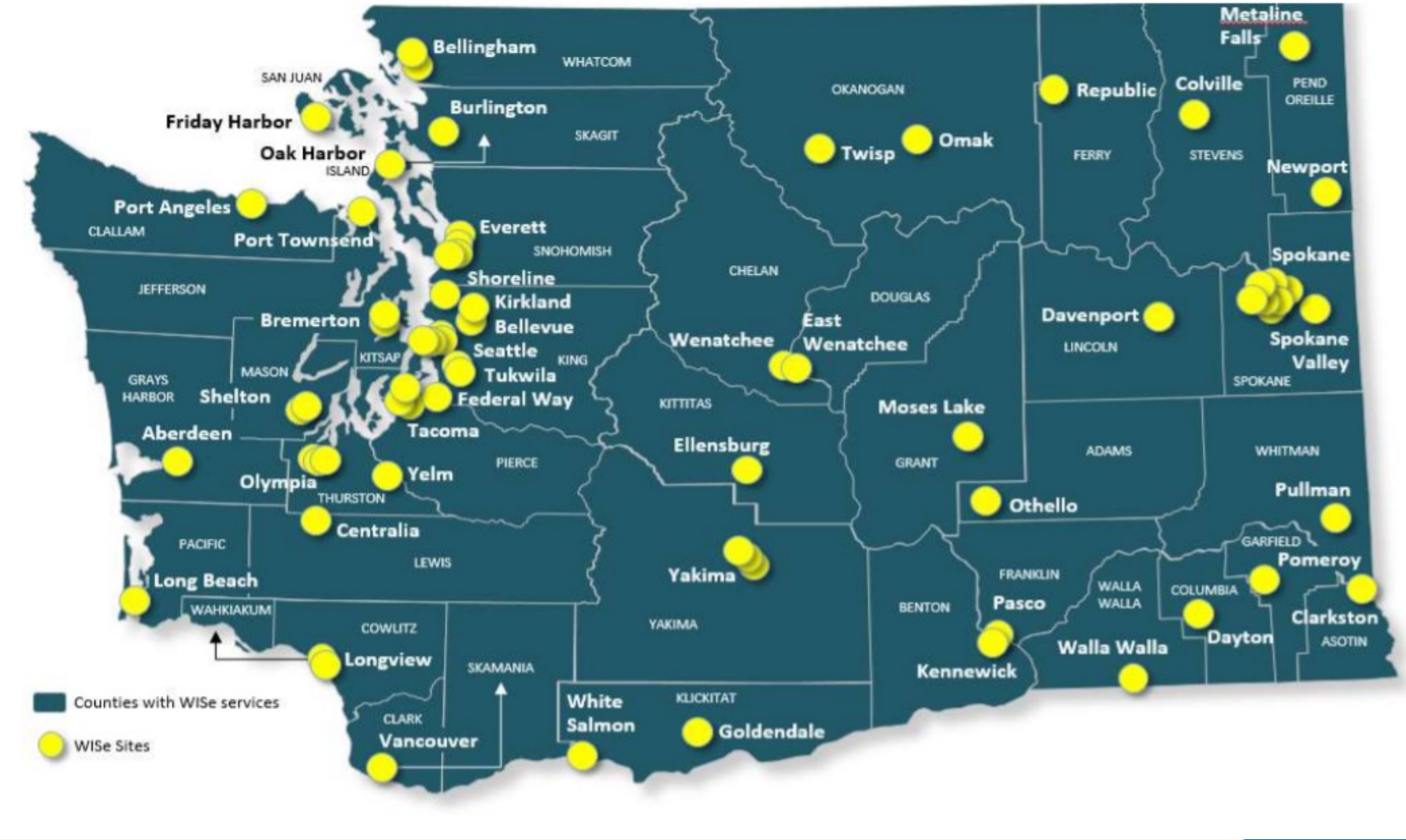
To find who to contact go to:

<https://www.hca.wa.gov/assets/free-or-low-cost/wise-referral-contact-list-by-county.pdf>

and Click on the “WISE Referral Contact List by County” document.

WISE Service Providers as of February 2020

(Services provided in community settings regardless of office location)



WISe Web Page

www.hca.wa.gov/billers-providers-partners/behavioral-health-recovery/wraparound-intensive-services-wisesh-and-recovery/wraparound-intensive-services-wise-implementation

Where can I find guidance for referring to WISe?

We have developed a series of protocols to help guide youth, families, system partners and WISe practitioners. These protocols include overviews of program practice, requirements, roles and responsibilities.

- [WISe general protocol overview](#)
- [Protocol: youth and substance use disorder](#)
- [Protocol: Office of Superintendent and Public Instruction \(OSPI\)](#)
- [Protocol: juvenile court, detention, and probation personnel](#)
- [Protocol: youth experiencing homelessness](#)
- [Protocol: children's long term inpatient treatment \(CLIP\)](#)
- [Department of Children, Youth and Families policy](#)
- [Developmental Disabilities Administration referral process](#)
- [AI/AN WISe referral fee-for-services providers contact list](#)

Questions

THANK YOU!

Contact information: Jim Mancini – jmancini@uw.edu, Gary Stobbe – gastobbe@uw.edu, Paul Davis – paul.davis@hca.gov